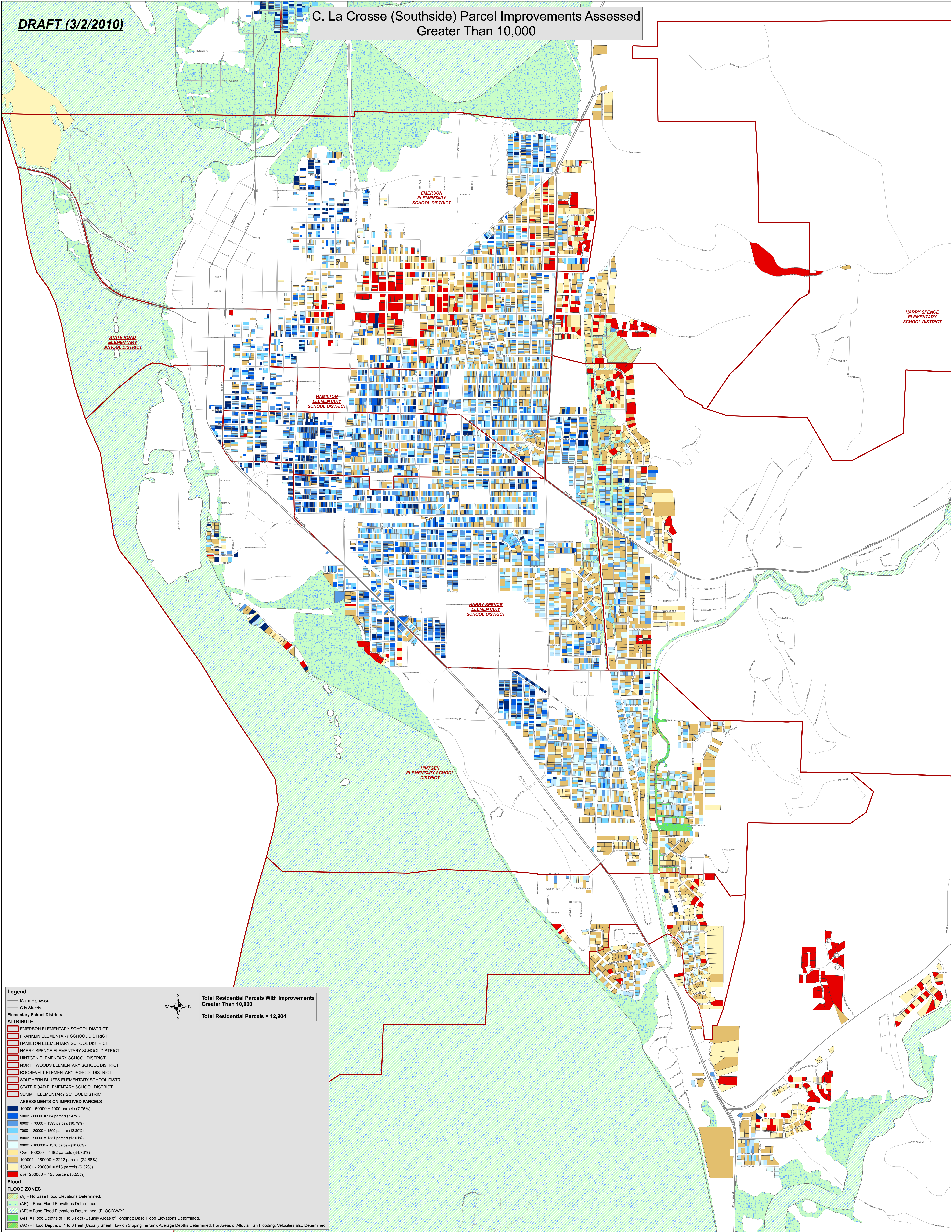


DRAFT (3/2/2010)

C. La Crosse (Southside) Parcel Improvements Assessed
Greater Than 10,000



Legend

Major Highways

City Streets

Elementary School Districts

ATTRIBUTE

EMERSON ELEMENTARY SCHOOL DISTRICT

FRANKLIN ELEMENTARY SCHOOL DISTRICT

HAMILTON ELEMENTARY SCHOOL DISTRICT

HARRY SPENCE ELEMENTARY SCHOOL DISTRICT

HINTGEN ELEMENTARY SCHOOL DISTRICT

NORTH WOODS ELEMENTARY SCHOOL DISTRICT

ROOSEVELT ELEMENTARY SCHOOL DISTRICT

SOUTHERN BLUFFS ELEMENTARY SCHOOL DISTRICT

STATE ROAD ELEMENTARY SCHOOL DISTRICT

SUMMIT ELEMENTARY SCHOOL DISTRICT

ASSESSMENTS ON IMPROVED PARCELS

10000 - 50000 = 1000 parcels (7.75%)

50001 - 60000 = 964 parcels (7.47%)

60001 - 70000 = 1393 parcels (10.79%)

70001 - 80000 = 1599 parcels (12.39%)

80001 - 90000 = 1551 parcels (12.01%)

90001 - 100000 = 1376 parcels (10.66%)

Over 100000 = 4482 parcels (34.73%)

100001 - 150000 = 3212 parcels (24.88%)

150001 - 200000 = 815 parcels (6.32%)

over 200000 = 455 parcels (3.53%)

Flood

FLOOD ZONES

(A) = No Base Flood Elevations Determined.

(AE) = Base Flood Elevations Determined.

(AE) = Base Flood Elevations Determined (FLOODWAY).

(AH) = Flood Depths of 1 to 3 Feet (Usually Areas of Ponding). Base Flood Elevations Determined.

(AO) = Flood Depths of 1 to 3 Feet (Usually Sheet Flow on Sloping Terrain). Average Depths Determined. For Areas of Alluvial Fan Flooding. Velocities also Determined.

Total Residential Parcels With Improvements Greater Than 10,000

Total Residential Parcels = 12,904